

19.10.2015

Halfway to Ph.D.? What will happen next?

Oleksandr Kazymyrov

EVERY

AGENDA

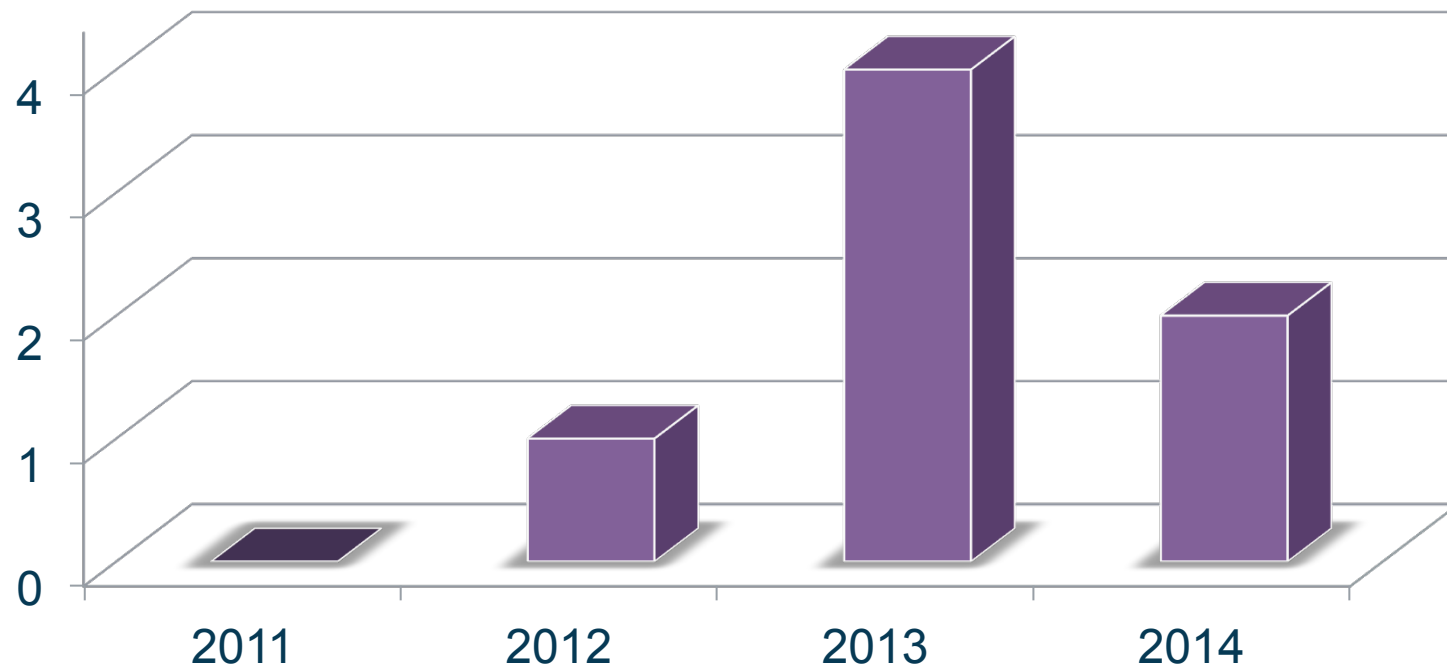
- Pre-graduation
- Graduation
- Post-graduation
- Half a year in industry

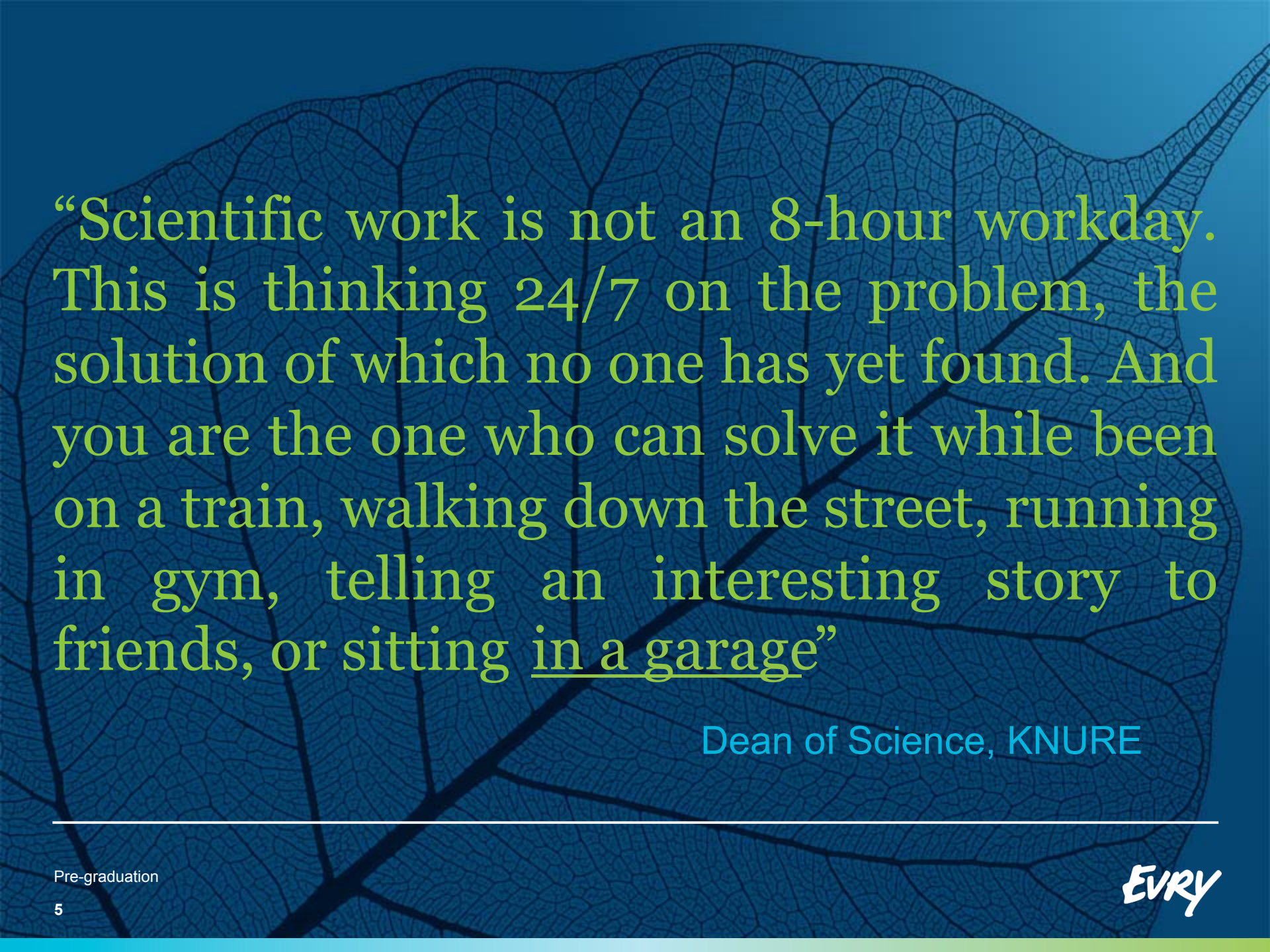
Timeline



Trend of articles

Articles

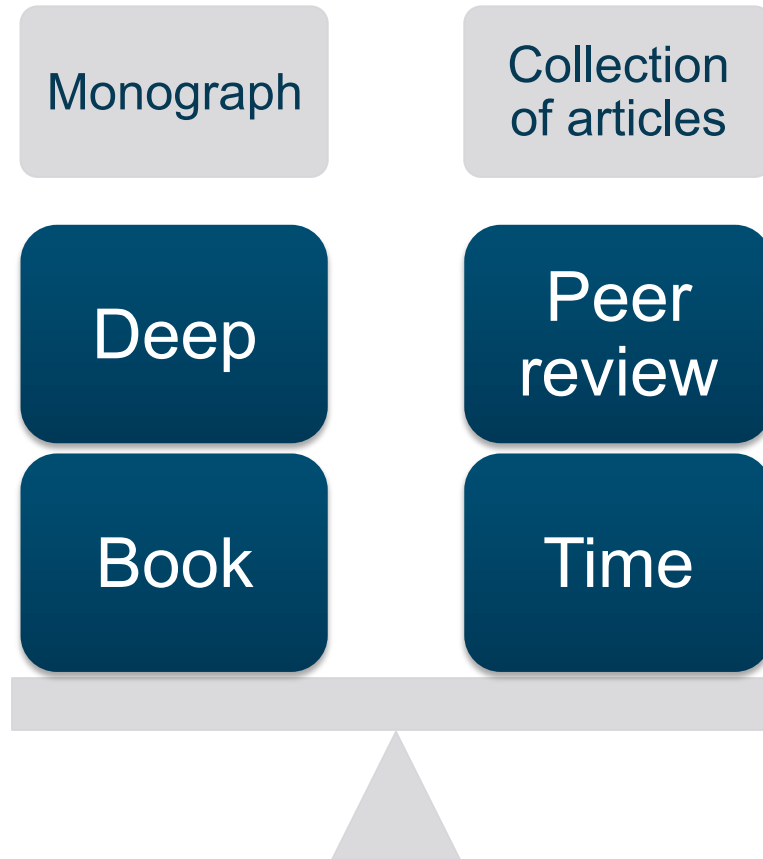




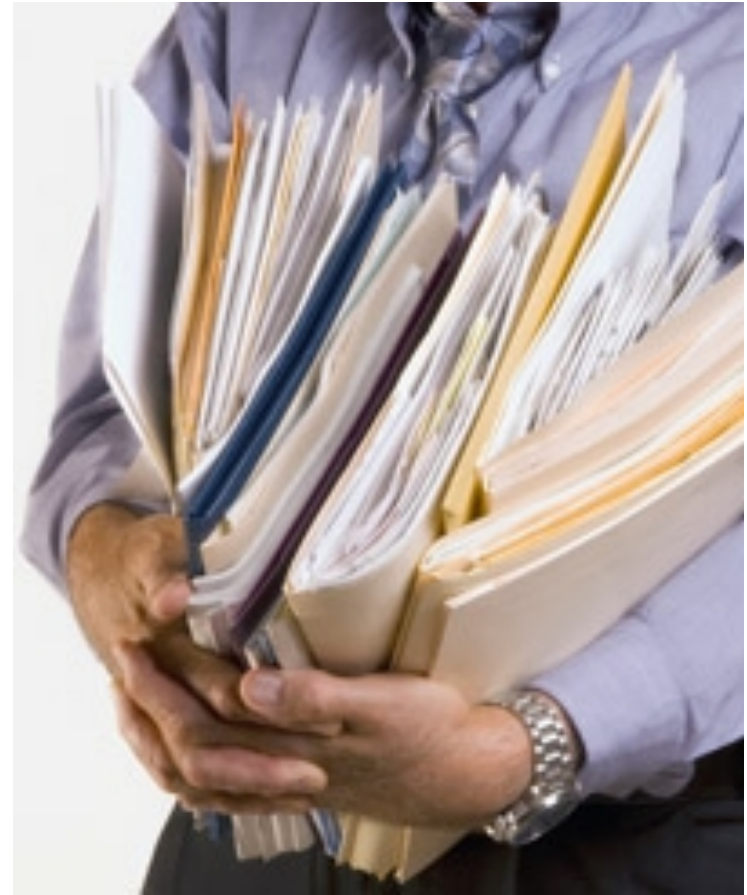
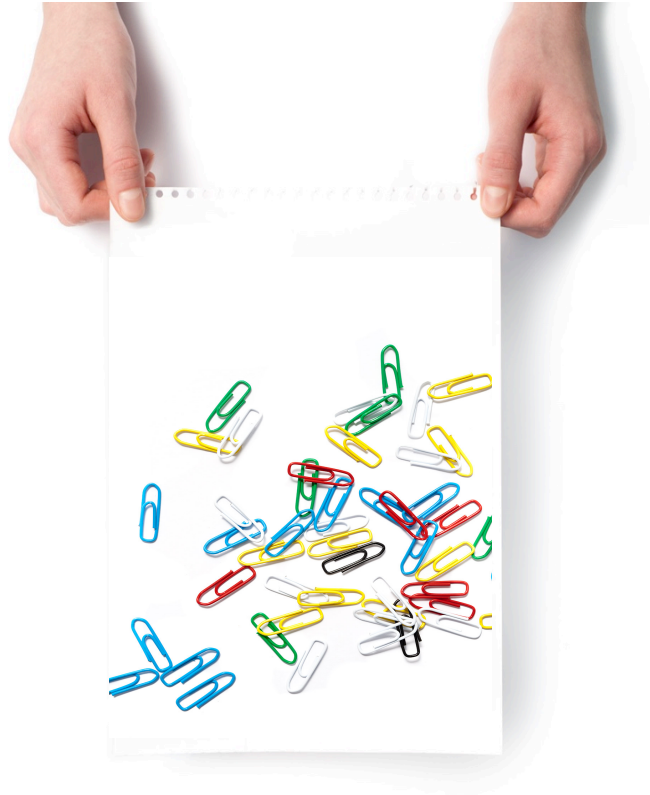
“Scientific work is not an 8-hour workday. This is thinking 24/7 on the problem, the solution of which no one has yet found. And you are the one who can solve it while been on a train, walking down the street, running in gym, telling an interesting story to friends, or sitting in a garage”

Dean of Science, KNURE

Monograph vs Compilation Thesis?




Comparison of thesis submission in Ukraine and Norway



A hand is holding a white rectangular sign with a perforated left edge. The sign has the text "DO's & DON'TS" written on it in a casual, hand-drawn style. The word "DO's" is in green, the ampersand "&" is in green, and "DON'TS" is in red. The background is a plain, light-colored surface.

DO's &
DON'TS



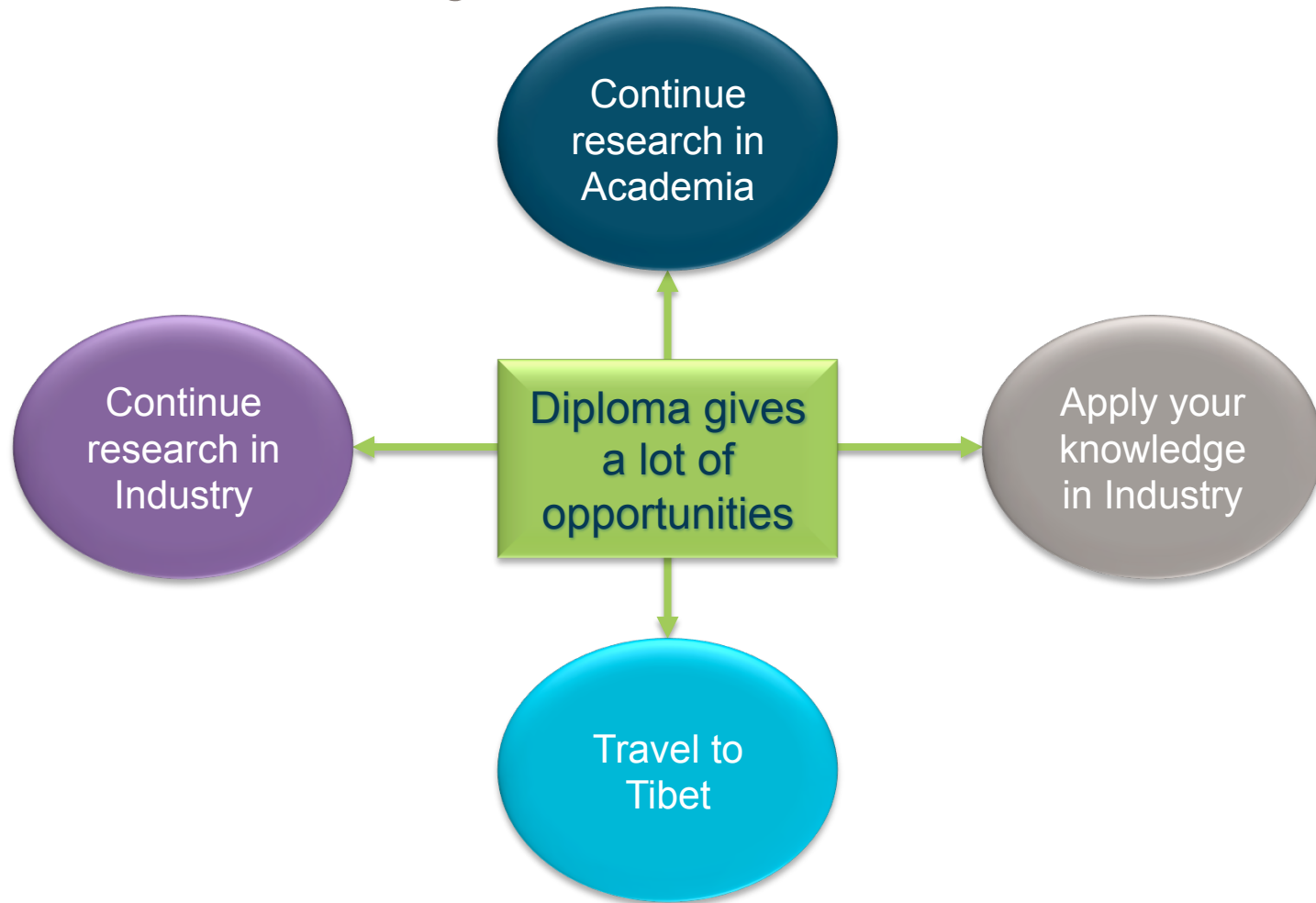
Defense is your 45 minutes of glory!



Timeline



Possibilities after graduation



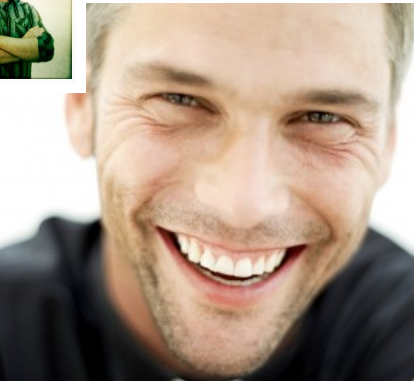
A Life-Cycle of Job Hunting

- Interviews (many and various)
 - Google, CloudFlare, VizRT, Skandiabanken, EVRY
- 9 month of job search
 - CloudFlare:
 - 5 rounds
 - November - March
- From a couple of weeks till 3 months of waiting for the final decision
- A long-awaited congratulations!





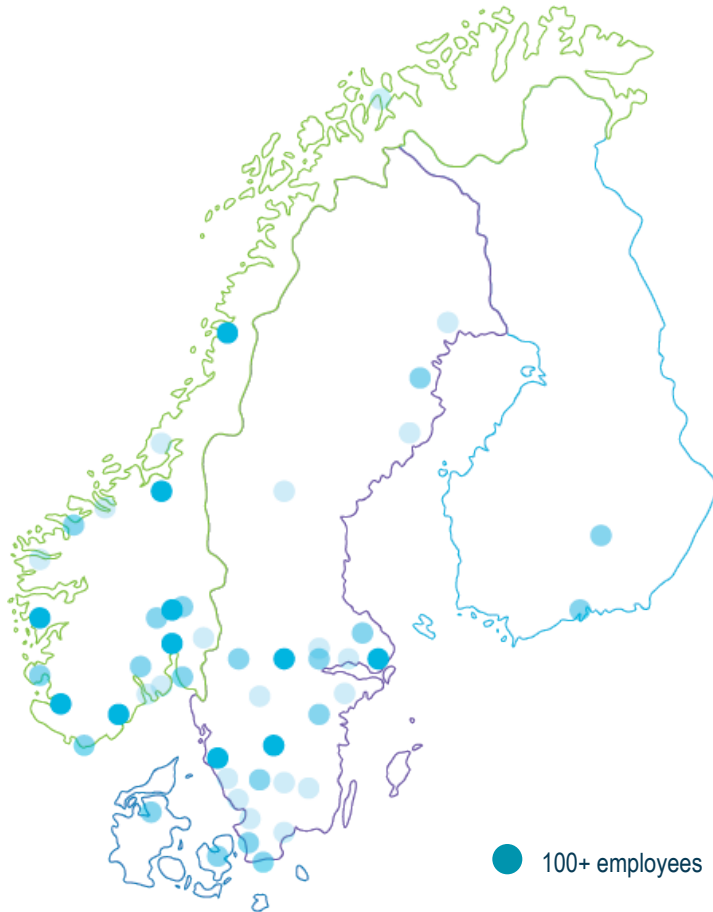
Welcome to
EVERY



Timeline



EVERY – the most local IT company in the Nordics



Close to our customers

- 50 towns and cities with capacity to deliver
- 11 regional offices with specialist competencies

Strong competencies

- 10,300 employees
- 4,900 employees in Norway
- 2,500 in Sweden
- 2,900 in India, Ukraine and Latvia

Key figures

- Revenue NOK 12.7 bn in 2014

Shareholders

- Apax 88%
- Listed on the Oslo Stock Exchange since 1997

Unique position

...with strong positions in the Nordic market

Norway



1 Total market share 31%

- # 1 Bank & finance 56%
- # 1 SME segment 22%
- # 1 Outsourcing 37%
- # 1 Consulting 20%

Sweden



4 Total market share 7.5%

- # 1 SME segment 17%
- # 5 Outsourcing 6%
- # 3 Consulting 7.5%



Finland: FS and SME-focus

Denmark: FS-focus

Global sourcing



Latvia: Nearshore Help Desk



India: Offshore Operations & AD/AM



Ukraine: Offshore AD/AM

Geographical location



Inside EVRY

Financial services



Project & Business support

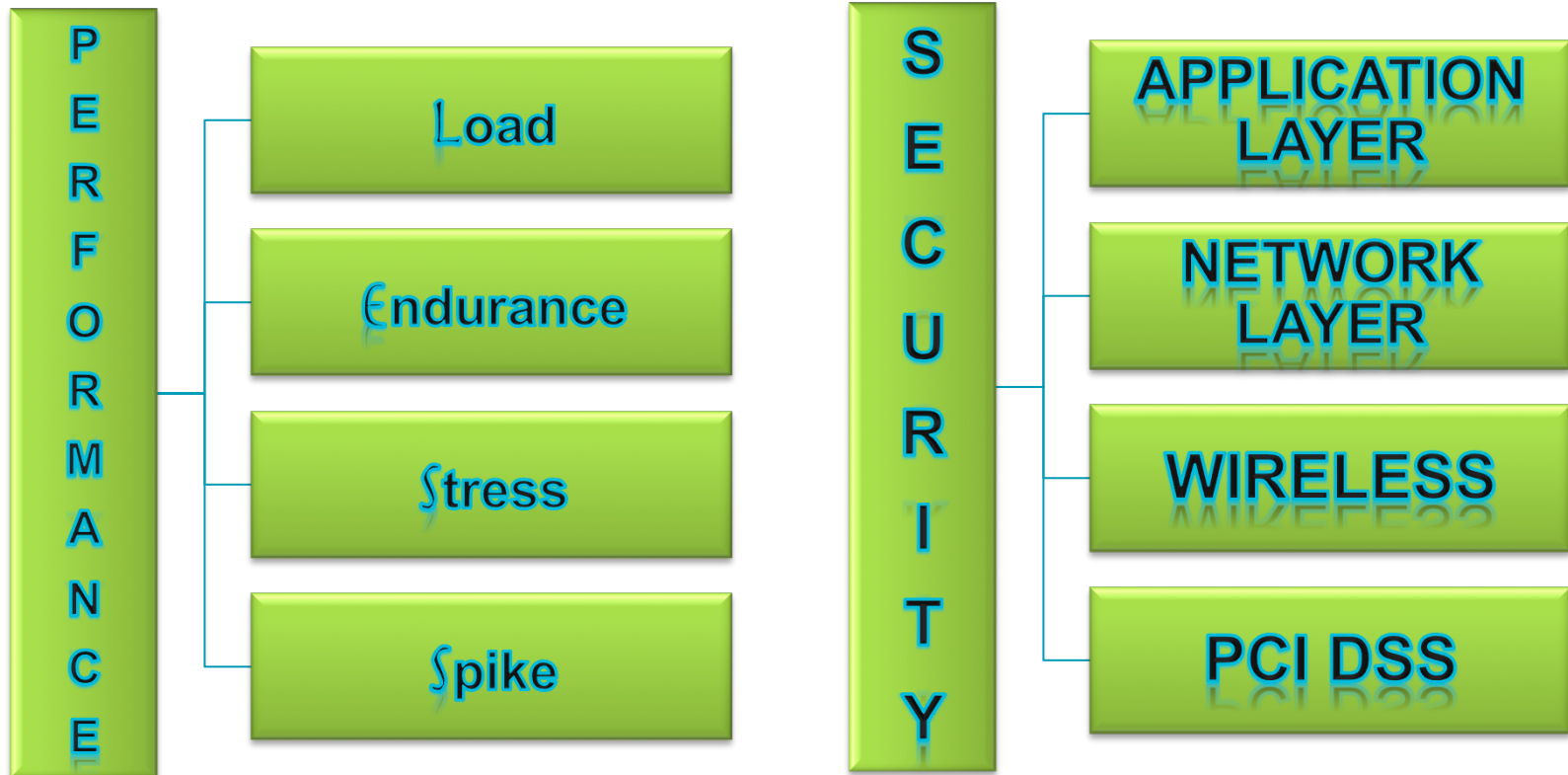


Pre-production services



Non-functional testing

What is non-functional testing (NFT)?



Security: Application layer



Security: Network layer

- PCI DSS Requirement 11.2 and 11.3
 - Perform external penetration testing
 - Perform internal penetration testing
 - Verify that the segmentation methods are operational and effective, and isolate all out-of-scope systems from systems in the CDE
- Methodologies
 - PCI DSS Penetration Testing Guidance
 - NIST Special Publication 800-115
 - Open Source Security Testing Methodology Manual

Security: Wireless

PCI DSS Requirements	Testing Procedures	Guidance
<p>11.1 Implement processes to test for the presence of wireless access points (802.11), and detect and identify all authorized and unauthorized wireless access points on a quarterly basis.</p> <p>Note: <i>Methods that may be used in the process include but are not limited to wireless network scans, physical/logical inspections of system components and infrastructure, network access control (NAC), or wireless IDS/IPS.</i></p> <p><i>Whichever methods are used, they must be sufficient to detect and identify both authorized and unauthorized devices.</i></p>	<p>11.1.a Examine policies and procedures to verify processes are defined for detection and identification of both authorized and unauthorized wireless access points on a quarterly basis.</p>	<p>Implementation and/or exploitation of wireless technology within a network are some of the most common paths for malicious users to gain access to the network and cardholder data. If a wireless device or network is installed without a company's knowledge, it can allow an attacker to easily and "invisibly" enter the network. Unauthorized wireless devices may be hidden within or attached to a computer or other system component, or be attached directly to a network port or network device, such as a switch or router. Any such unauthorized device could result in an unauthorized access point into the environment.</p> <p>Knowing which wireless devices are authorized can help administrators quickly identify non-authorized wireless devices, and responding to the identification of unauthorized wireless access points helps to proactively minimize the exposure of CDE to malicious individuals.</p> <p>Due to the ease with which a wireless access point can be attached to a network, the difficulty in detecting their presence, and the increased risk presented by unauthorized wireless devices, these processes must be performed even when a policy exists prohibiting the use of wireless technology.</p> <p>The size and complexity of a particular environment will dictate the appropriate tools and processes to be used to provide sufficient assurance that a rogue wireless access point has not been installed in the environment.</p> <p><i>(Continued on next page)</i></p>
	<p>11.1.b Verify that the methodology is adequate to detect and identify any unauthorized wireless access points, including at least the following:</p> <ul style="list-style-type: none"> • WLAN cards inserted into system components • Portable or mobile devices attached to system components to create a wireless access point (for example, by USB, etc.) • Wireless devices attached to a network port or network device. 	
	<p>11.1.c If wireless scanning is utilized, examine output from recent wireless scans to verify that:</p> <ul style="list-style-type: none"> • Authorized and unauthorized wireless access points are identified, and • The scan is performed at least quarterly for all system components and facilities. 	
	<p>11.1.d If automated monitoring is utilized (for example, wireless IDS/IPS, NAC, etc.), verify the configuration will generate alerts to notify personnel.</p>	

On top of that

- Enchantment of procedures and methodologies
- Self-education and sharing experience
- Meetings and co-operations
- Installation, configuration and maintenance of auxiliary tools



Unique position

A part of everyday life for millions of Nordic citizens

When you

- receive a package notification via SMS from the Post
- withdraw cash from an ATM in Norway or Sweden
- are being credit evaluated
- receive the tax assessment from the Norwegian tax authority
- pass a toll road station
- do a lookup in the national register of motor vehicles
- use your credit card or mobile banking services
- pick up an e-prescription at a Norwegian pharmacy
- buy a ticket with the Swedish railways





“Whatever you do, do it well.”

Pittacus of Mytilene



EVERY

We bring information to life